



---

**K.S. RANGASAMY COLLEGE OF TECHNOLOGY**  
**(Autonomous)**

Tiruchengode - 637 215, Namakkal, Tamil Nadu

---

**POLICY ON ADVANCED**  
**&**  
**SLOW LEARNERS**

**MAY 2025**

## Index

S.No	Content	Page No.
1	Introduction	1
2	Objectives	1
3	Identification Criteria	1
4	Flow chart for identification of advanced and slow learners	2
5	Support Strategies for Slow Learners	3
6	Support Strategies for Advanced Learners	3

## Policy on Advanced and Slow Learners

### Introduction

K S Rangasamy College of Technology aims to provide inclusive and effective education to all students. This policy outlines the strategies to support both advanced learners and slow learners, ensuring that each student can achieve their full potential.

### Objectives

The objectives of this policy are to:

1. Identify advanced and slow learners based on specific criteria
2. Implement support strategies tailored to the needs of both groups
3. Monitor and review the effectiveness of these strategies

### Identification Criteria

#### Advanced Learners:

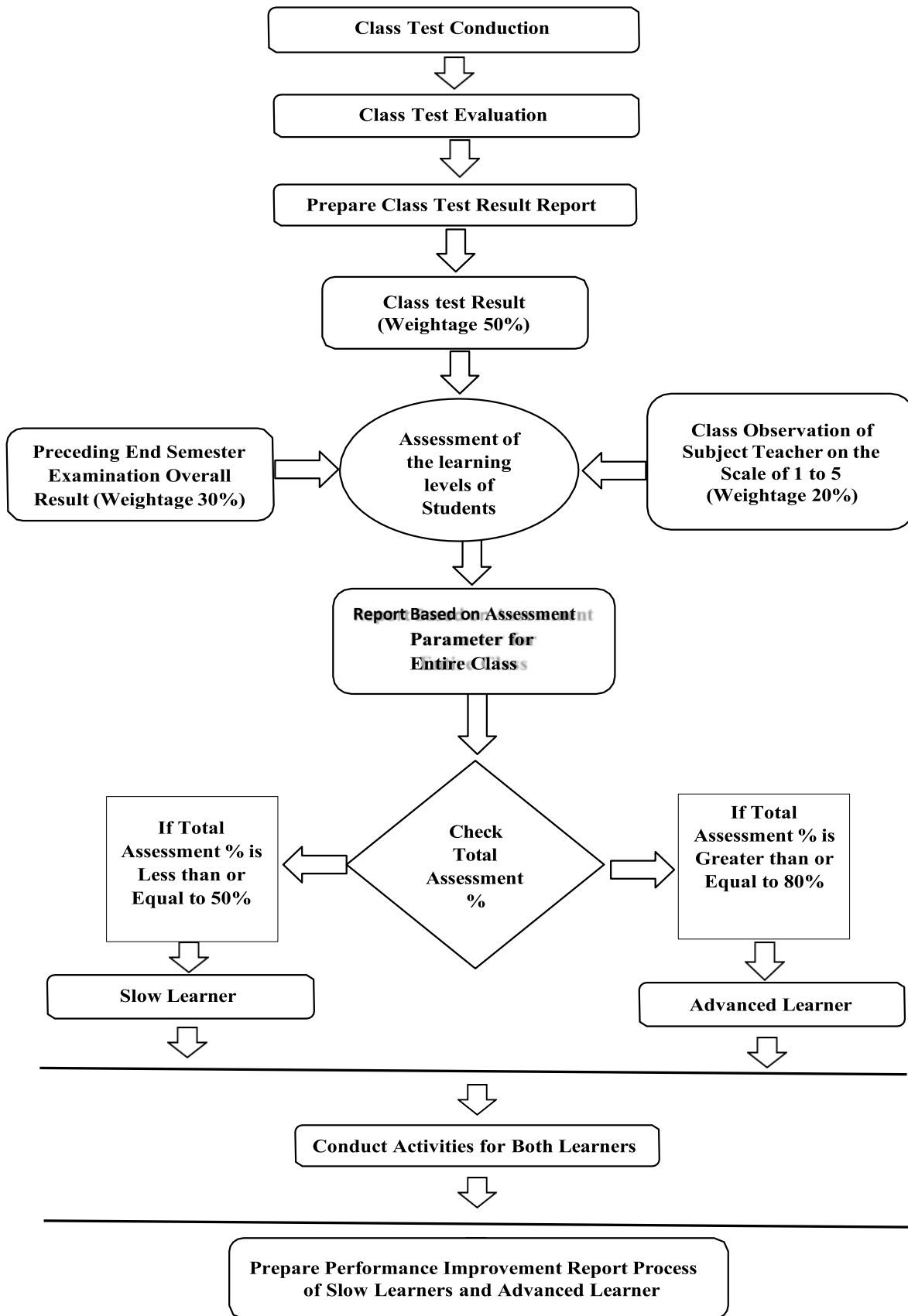
- Students scoring above 80% in assessment criteria including performance in assessments and observation by faculty
- Observations during orientation and academic performance tracking

#### Slow Learners:

- Based on performance in internal assessments, university exams, and faculty observations.
- Additional inputs from induction programs and mentoring sessions

The identification process flow chart is shown in the figure

Flow chart for identification of advanced and slow learners



### **Support Strategies for Slow Learners**

1. Remedial Classes: Extra sessions for difficult courses, both theory and practical.
2. Mentoring: Regular interaction with faculty mentors to address academic and personal challenges.
3. Parental Involvement: Periodic updates to parents about student progress.
4. Customized Assignments: Practice with past university papers and simplified tasks.
5. Skill Development: Focus on communication, public speaking, and time management.
6. Compensatory Teaching: Extra hours in the timetable for revision and problem-solving.
7. Use of Multimedia: Audio-visual aids to enhance understanding.

### **Support Strategies for Advanced Learners**

1. Advanced Assignments: Challenging tasks and research-based projects.
2. Leadership Roles: Opportunities to lead student committees and events.
3. Participation in Competitions: Encouragement to join national/international contests.
4. Online Courses: Enrollment in NPTEL, SWAYAM, and other MOOCs.
5. Internships & Research: Access to industry-sponsored projects and internships.
6. Professional Development: Membership in technical societies and organizing events.
7. Entrepreneurial Support: Guidance for startups and innovation projects.